



# ENTRANET

SPEECH TECHNOLOGY APPLICATIONS

simply talk!



EUROPEAN UNION  
EUROPEAN REGIONAL  
DEVELOPMENT FUND



COMPETITIVENESS AND  
ENTREPRENEURSHIP  
OPC II  
regions of the union of development



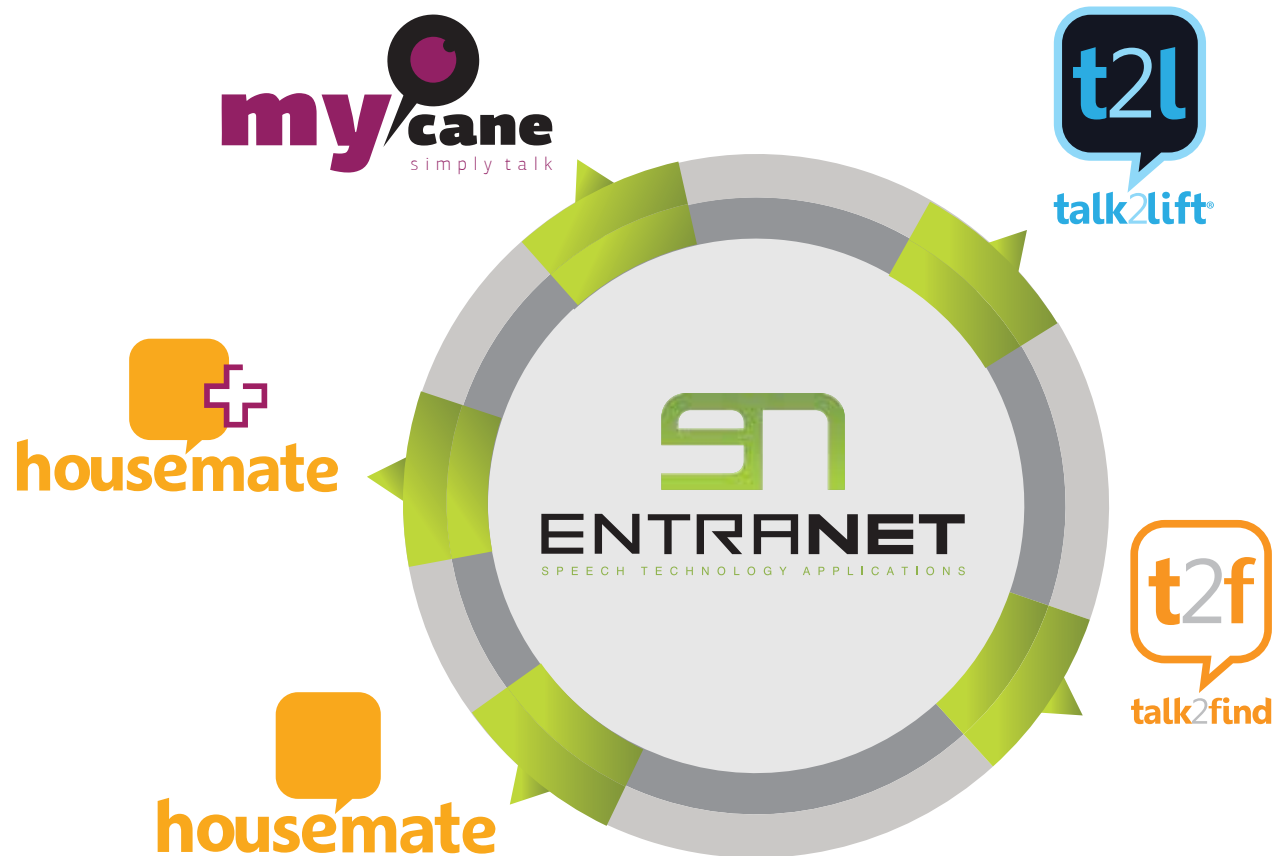
NSRF  
2007-2013  
Programme for Development

Ministry of Education and Religious Affairs  
OSRF - Management and Implementation Agency for RTD and Innovation Activities

D.P. Competitiveness and Entrepreneurship (EPAN II), RDP Macedonia - Thrace, RDP Crete and Aegean Islands, RDP Thessaly -  
Mainland Greece - Epirus, RDP Attica



## *entranet's products*





*entranet's products*

**97%!**  
**precision ●**

The background of the slide is a grayscale photograph showing several hands of different ages and skin tones being held together in a supportive grip. The hands are layered, with some fingers visible over others, creating a sense of unity and care.

# assisted living **market**



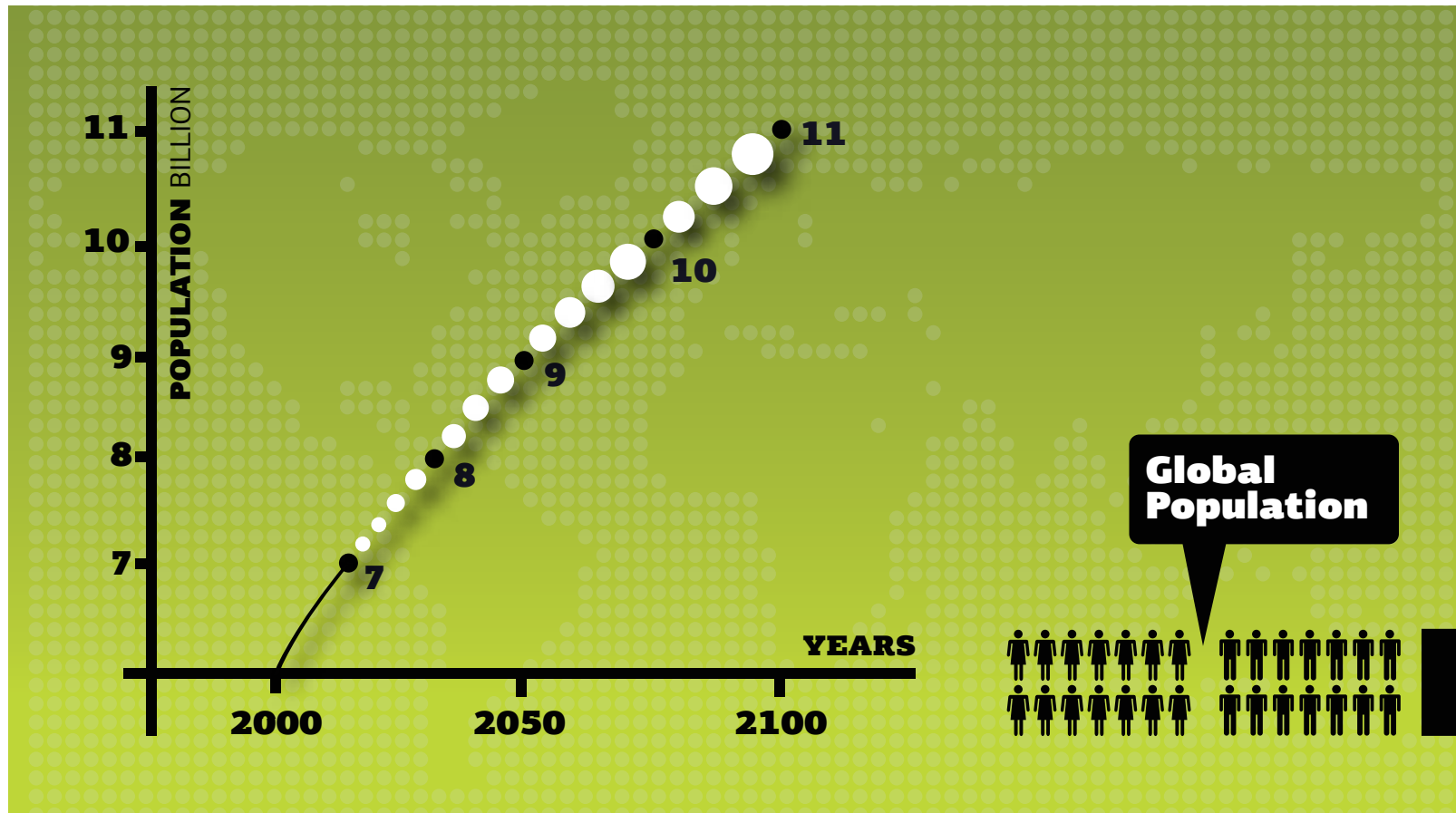
## *assisted living market*

### *Demographic trends / Population growth*

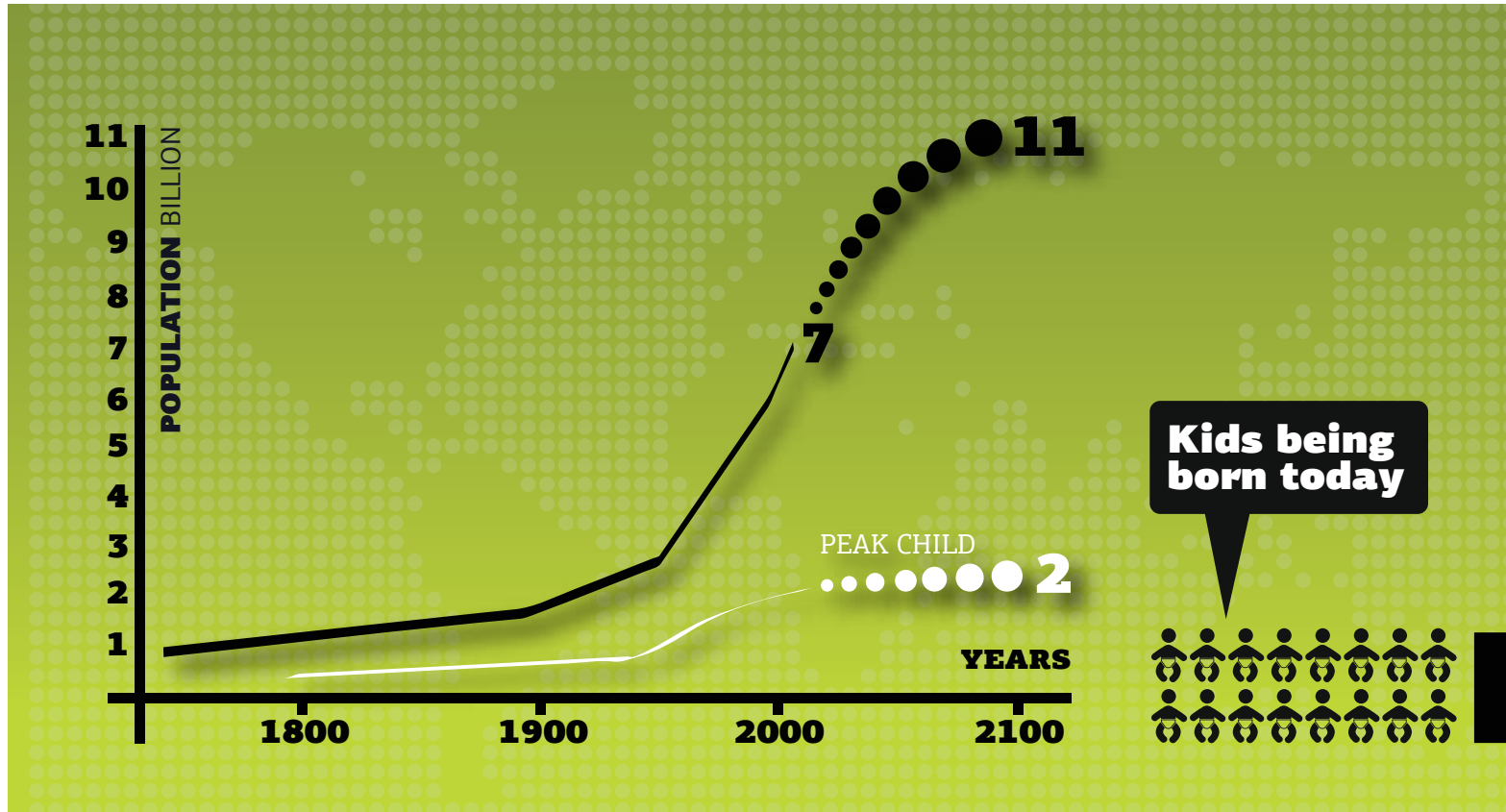


- » Global population will grow to 8.3bn until 2030.
- » Greatest challenge since humans became social
- » Cities – c.2% of global land mass but consume c.80% resources
- » Current global population: c.7bn; forecast for 2030: 8.3bn  
(UK: 62.3mn growing to c.75mn by 2030)
- » 1950 – 30% of global population urbanised
- » Today – 80% of developed world lives in cities
- » 2050 – 80% of global population will be urbanised
- » Not just an issue for developing countries;  
cities will also grow in developed world by c.6%

## *assisted living market*



## *assisted living market*





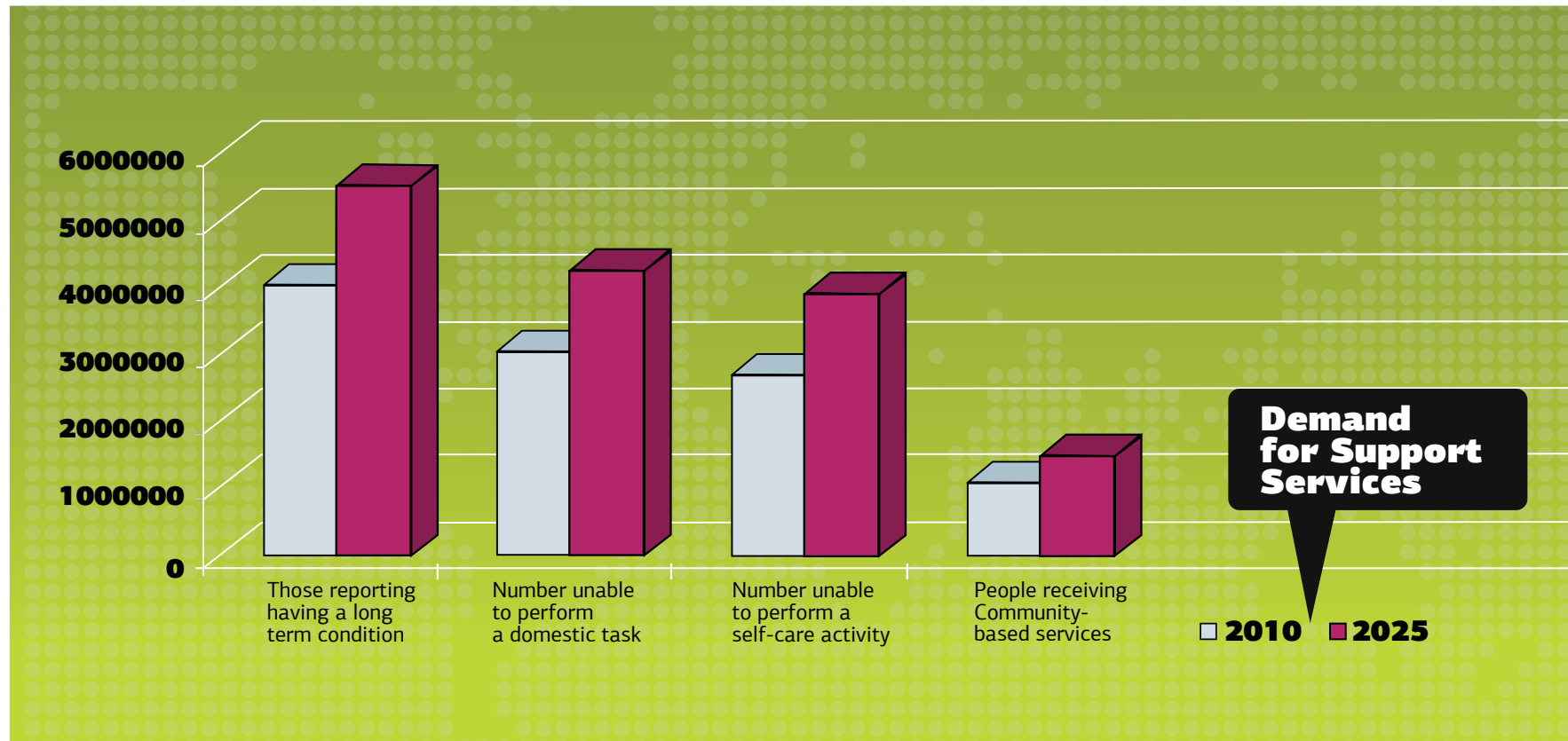
## *assisted living market*



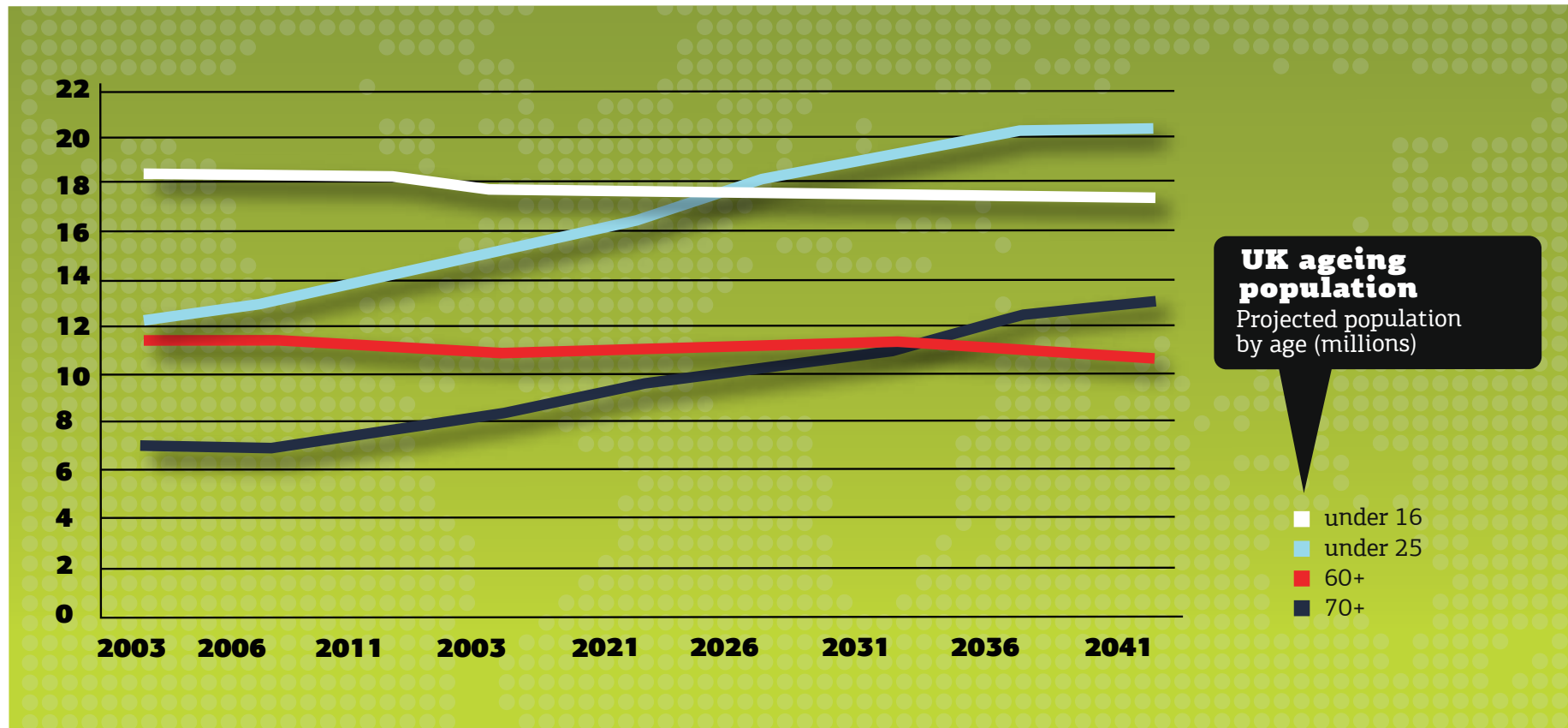


## *assisted living market*

### *Demand for Support Services*

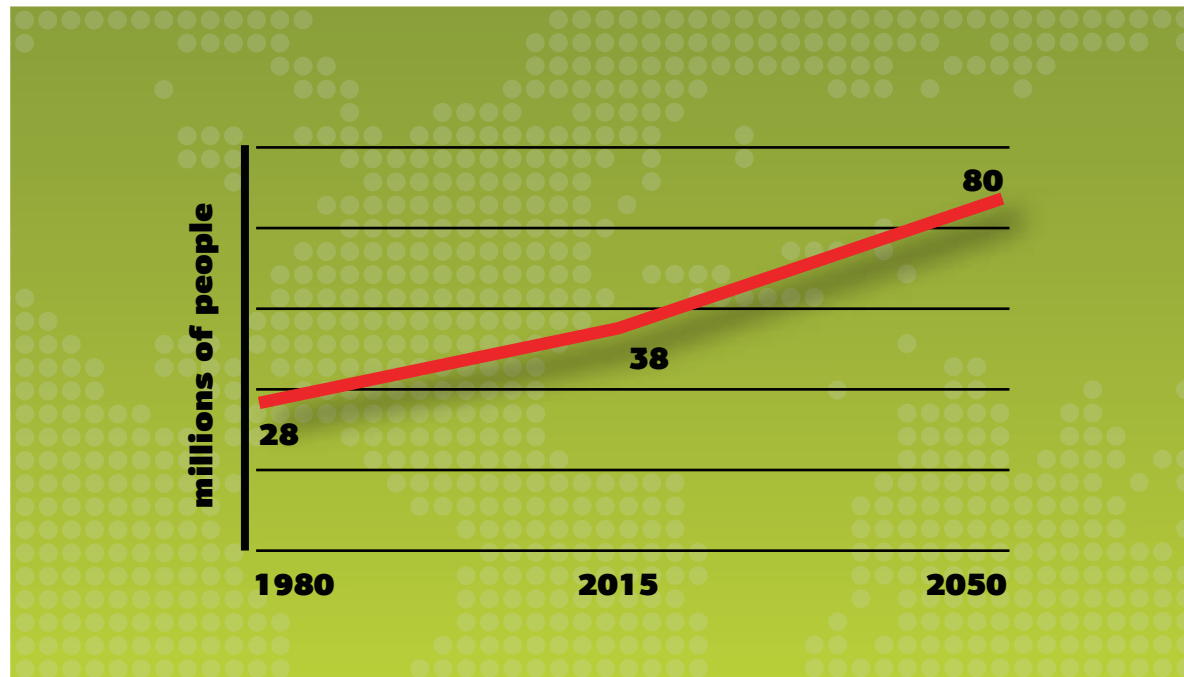


## *assisted living market*





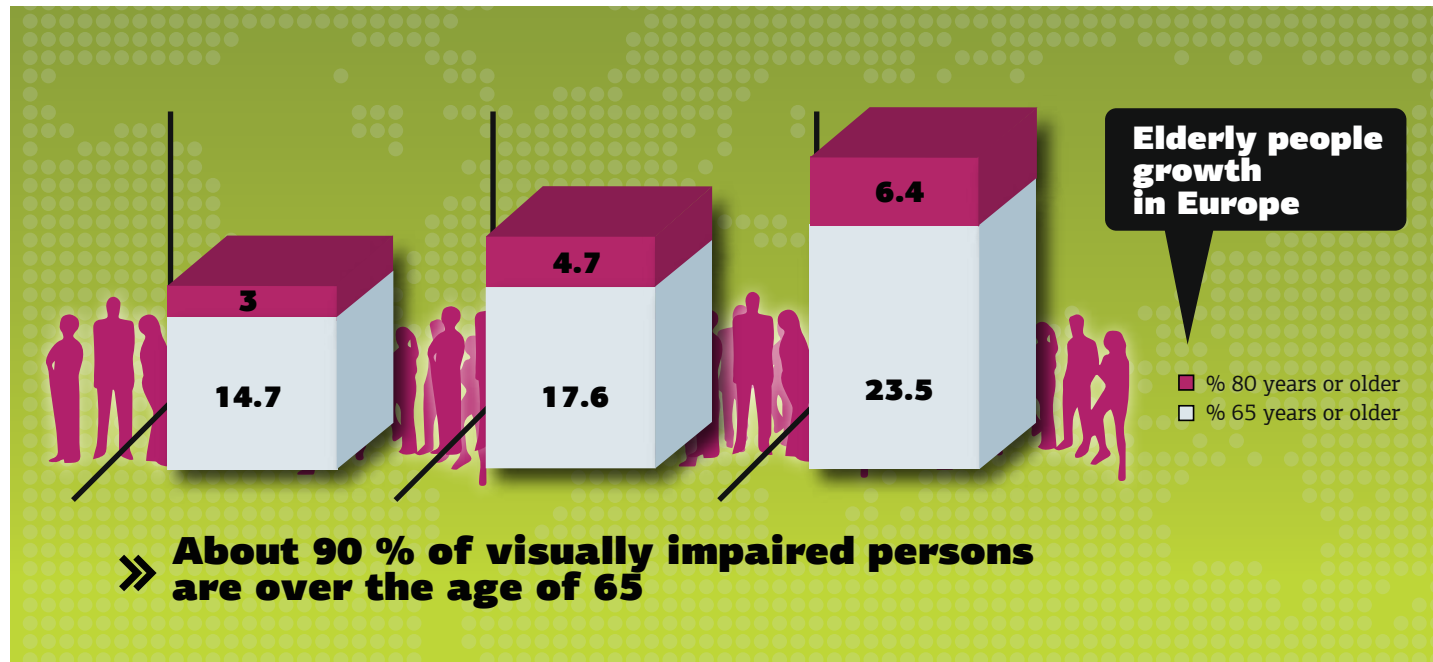
## *assisted living market*



Between 1990 and 2020 the population at 65-74, estimated to increase 74%.  
At the same period the people under 65 will increase only by 27%.

## *entranet's products*

### *Visually impaired people in Europe*



From a diagram we can see that next 18 years the elderly people in Europe above 65 years will increase at 50%.

Based on WHO about 90 % of visually impaired persons are over the age of 65.

**The numbers suggest that growth in life expectancy could raise number of visually impaired people.**



# *assisted living market*

## *The aging population*

**92% of older people  
want to live  
in the place  
where they grew up**

92%

intimacy  
comfort  
security  
independence

**CAUSES**  
Mainly looking for

**RISKS**

falls  
burns  
drug intoxication

## *entranet's products*

### *Advantages for Elderly and people with disabilities*



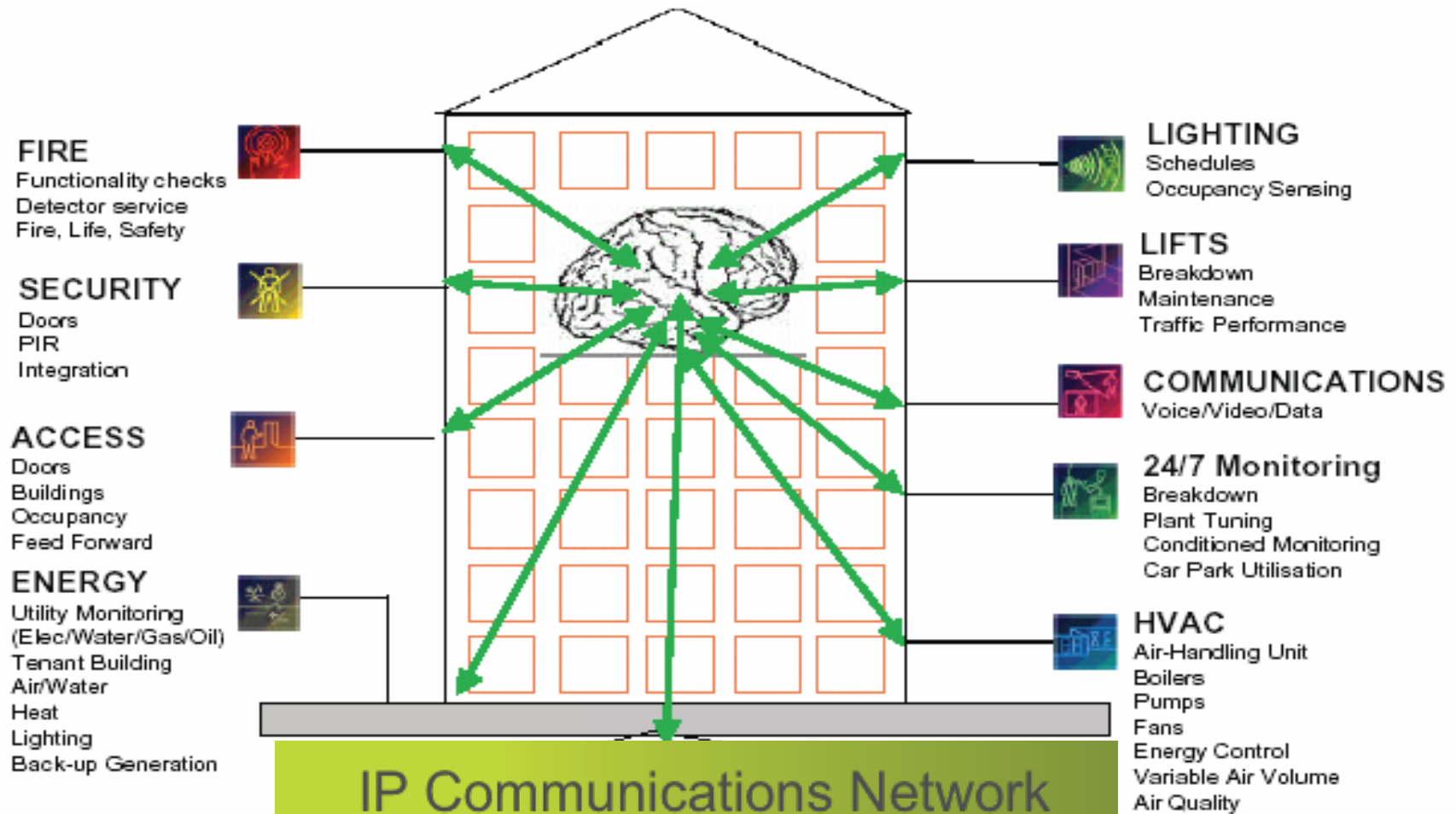
**The European countries have underlined the importance of using information and communication technology in healthcare primarily to tackle the growing elderly population.**

Smart Homes and Assisted Living Technology geographic scope in Europe is mainly in the United Kingdom, Germany, France, Spain, Italy, Scandinavia countries and Benelux.

**Moreover, the aging of the population will create a large area of unmet demand in the following decade for Assisted Living facilities.**

## *assisted living market*

*So what?*





## *assisted living market*

### *Researches - Programs European Commision*



#### Easy line + project



It examines **the use of sensors and assistive software** in order to develop a system of control for goods (washing-machines, refrigerators etc).

##### **Sensors:**

lighting, temperature, doors and the determination f radiofrequency.

**Digital television** with a remote control.

##### **Appliance of touch screen**

for portable appliance

#### Persona



**Platform of services** in combination with environmental helped technologies.

**Support** in the activities, the mobility, the shift and the protection of health from the environmental danger.

#### University of Rochester the Smart Medical Home



**House equipped with infra red sensors,** biosensors, computers and video camera.

Recording and communication, appliance of bodies of walking control, robotic walker, system of follow-up of sleep.

The elements for observation and statistics of general level of health.



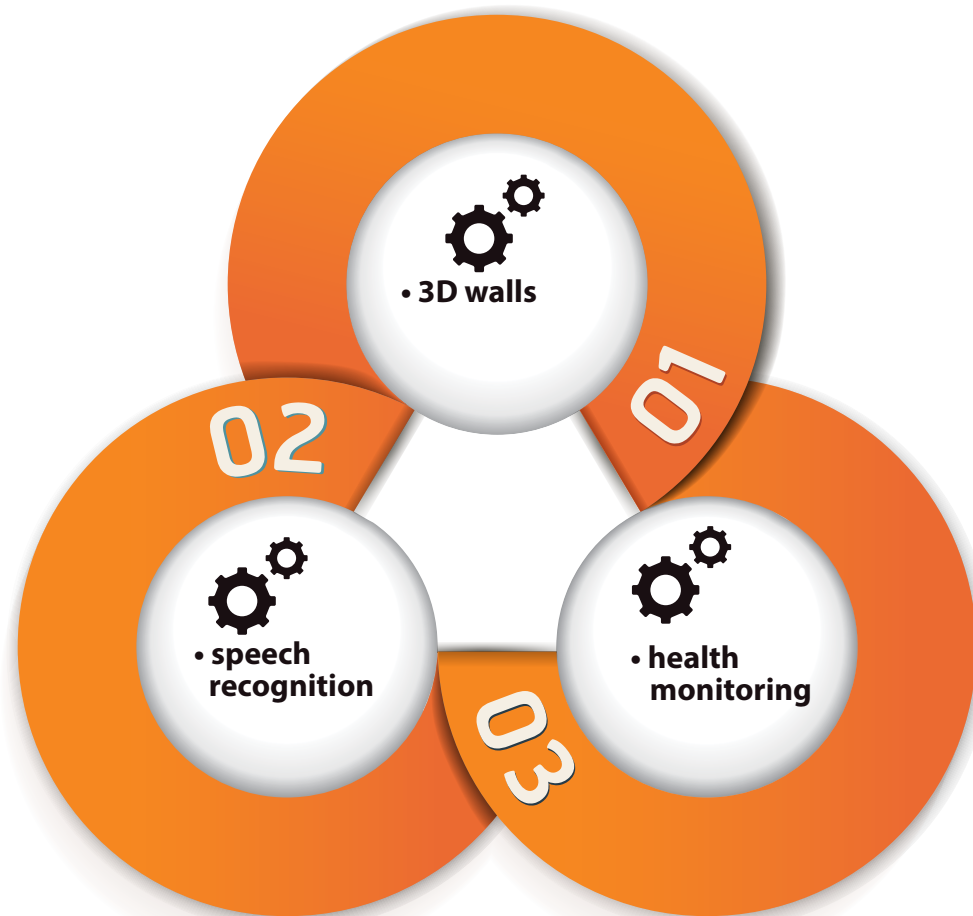
assisted living  
**smart home**  
by



**ENTRANET**  
S P E E C H   T E C H N O L O G Y   A P P L I C A T I O N S



## *assisted living smart home* *basic characteristics*





**βραβεύσεις**



ENTRANET has been selected as a  
**National Champion 2015  
in innovation!**





**Σήμερα υπάρχουν 3 ENTRANET!**



# Επενδυτική ευκαιρία

## Παράλληλη αγορά Αμερικής

**Thank you**  
for your kind attention!

**ENTPANET's team**



**ENTRANET**  
S P E E C H   T E C H N O L O G Y   A P P L I C A T I O N S

[www.entranetinc.com](http://www.entranetinc.com)  
[www.talk2lift.com](http://www.talk2lift.com)

